

Ubala lolu

Ibhalwe nguBandile Sikwane | Imifanekiso ngu-Elizabeth Sparg

UHank iNsele Eyigeza Lensizwa yayipheka kahle ukudlula wonke umuntu enkangala. Ukuzikhathaza kwakhe ngokuthola izithako ezingcono ukudlula zonke kwakumenza ehluke kakhulu kwabanye.

Indlela yokwenza isidlo sanamhlanje yayilula, kodwa lesi kwakuyisidlo esikhethekile. Wayesilungiselela iNtibane enguWendy. Wayephuke umlenze bakithi ngenkathi ebalekela izimpisi ezilambile.

Isidlo esasizokwenziwa sasidinga izithako okwakunzima ukuzithola.



UHank wayelwe nenhlwathi ekhuluphele wayehlula. Yayizoba inyama yesitshulu emnandi.

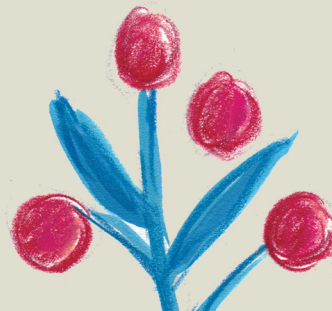
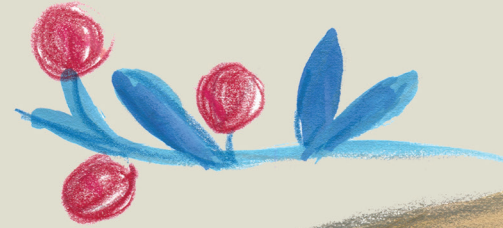


Wabekezelela ukutinyelwa yizinyosi eziningi ukuze aqongelele amanzi amnandi ezimbali kanye noju okuzophuzwa.



Ofezela abanobuthi bakhombisa ukungakuthokozeli ukwemba kwakhe ekhaya labo ukuze bathole amadumbe. Awu! Awu! Awu!

Walunywa yibululu ngesikhathi esaqongelela amajikijolo kanye notamatisi wasendle. Ubuthi bebululu bunesihlungu esikhulu. Kwathatha uHank amahora ambalwa ukuthi buphele egazini.





Kungaphelanga sikhathi eside, wafika ekhoneni likaWarthog Avenue noBaobab Street.

Abangani basithokozela isitshulu, nokuphuza ujuzi wezimbali ngesikhathi behleka izinkunzi zamaxoxo ezazixokozela zithethisa izinyendle ezibanga umsindo.

“Lesi yisidlo esimnandi ukudlula zonke owake waziphaka,” kusho uWendy, ulimi lwakhe luyaluza lubheka ukudla okungabe kusalele ebusweni bakhe. “Akubuzwa ukuthi kube umsebenzi omkhulu ukwenza konke lokhu.”

“Lutho mngani,” kuphendula uHank ngokukhulu ukunganaki. “Ubala lolu, khululeka. Lindela isiteki esiconsisa amathe sebululu engizokuphekela sona kusasa!”



Ubala lolu

Ibhalwe nguBandile Sikwane • Imifanekiso ngu-Elizabeth Sparg

Imibono okungaxoxwa ngayo

Yikuphi ukudla okuthandayo? Yiziphi izinto ozidingayo ukuze wenze ukudla okuthandayo? Obani ongabamema esidlweni sakusihlwa futhi kungani umema labo bantu?



Ezibonakalayo

Iya kuleli phepha lomsebenzi: <https://nalibali.org/story-supplies/activity-sheets>

Faka imibala esithombeni bese uyasiqedela. Dweba isithombe phakathi kwegwebu lomcabango ukuze ubonise lokho okucatshangwa u-Hank.



Ukufunda

Yiba umseshi wamagama! Bhekisisa indaba. Ungakwazi yini ukuthola amagama:

- ★ ezilwane eziyisishiyagalolunye
- ★ ezithelo ezimbili
- ★ emigwaqo emibili?



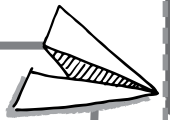
Ukubhala

Sebenzisa izinto ezisendabeni ukuze ubhale iresiphi yesitshulu esenziwe u-Hank. Khumbula ukuqala ubhale uhlu lwezinto ezidingekayo bese kuba iziqondiso okudingeke ukuba u-Hank azilandele ukuze enze isitshulu. Nikeza isitshulu igama.



Umsebenzi wezandla

Sebenzisa inhlama yokudlala noma ubumba ukuze wenze ibhodwe lesitshulu – kungaba yilesi esenziwe u-Hank noma isitshulu sakho!



Ukusebenza

Lingisa u-Hank eqoqa izinto zesitshulu bese eyasenza. Sebenzisa iresiphi ukuze ikusize.

