

Tambane tikhona ngempela?

Ibhalwe nguLesley Beake

Imidwebo idwetjwe nguTamsin Hinrichsen

Sikolo siphumile. Sesikhatsi sekuya ekhaya.

Samuel naMaryanne bayahamba, bayahamba.

“Tambane tikhona ngempela?” Samuel wabuta Maryanne.

“Yebo.”

“Titintfutwane?”

“Cha.”

“Tingemabhele?”

“Cha.”

Labantfwana bayahamba, bayahamba.

“Ngabe tambane tinkhulu?”

“Yebo.”

“Tinemandla?”

“Yebo.”

Labantfwana bayahamba, bayahamba.

“Ngabe titasidla?”

“Cha!”

“Tidla ini?”

“Tintfutwane.”



Labantfwana bayahamba, bayahamba.

“Ngabe tambane tihlala etihlahleni?”

“Cha.”

“Ngabe tambane tiyandiza njengetinyoni?”

“Cha.”

Labantfwana bayahamba, bayahamba.

“Ngabe tambane tihlala nebantfu?”

“Cha.”

“Ngabe tambane tiyalutsandza lujuzi?”

“Cha.”

Maryanne uyema akahambi. Samuel naye wema wangahambi, kodvwa hhayi ngekushesha ngalokwenele. Uhamba uya kuMaryanne. Ubukeka atfukutsele.

“Ngabe tambane ...”

Maryanne uphakamisa sandla sakhe.

“YEKELA KUBUTA IMIBUTO!”

“Kodvwa ...”

“YEKELA!”

Maryanne ukhombisa Samuel sakhiwo lesincane. Kuneluphawu kulesakhiwo.

UMTAPOLWATI.

Samuel ubuka Maryanne.

“Ngabe bayati ngetambane lapha ngekhatsi?”

“Yebo.”

Samuel ubuka umtapolwati.

“Ngingene yini?”

“Yebo.”

Samuel ungena nekhatsi. Lomtapolwati ugcwele tincwadzi. Kunemakhulukhulu etincwadzi. Mhlawumbe kunetinkhulungwane tetincwadzi. Utayitfola njani Samuel incwadzi lekhuluma ngetambane?

“Yebo?” kusho indvodza lelungile.

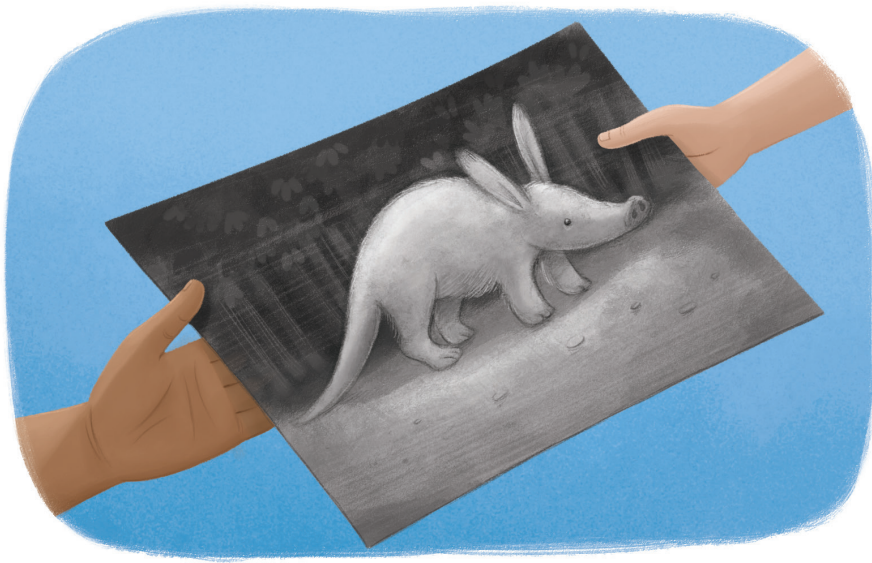
“Ngabe unayo incwadzi lekhuluma ngetambane?”
Somtapolwati uyamamatseka.

“Yebo.”



Lendvodza lelungile iletsa incwadzi. Samuel uhlala etafuleni utoyibuka.

- Tambane tinkhulu – tinkhulu kunelinyenti letinja.
- Tambane tidla tintfutwane naletinye tilokatana.
- Tambane takha emakhaya ato ngaphansi kwemhlaba.
- Tambane tikahle ekugubheni.
- Tambane tihlala emaveni lanetjani ase-Afrika.
- Tambane tite ematinyo.
- Tambane tiphindze tibitwe ngekutsi tingulube temhlaba.
- Tambane tiphumela ngaphandle ebusuku kuphela.



Samuel uyacabanga. Lendvodza lelungile yenta ifothokhophi yesitfombe sesambane. Uyinika Samuel. Samuel solo uyacabanga.

“Tambane tiphumela ngaphandle ebusuku kuphela,” kusho Samuel.

“Yebo.”

“Ngako-ke sati njani ngato?”

Lendvodza lelungile iyamoyitela.

“Bacwaningi bayatibuka ngekucopehelela. Bantfu babeka emakhamera kutsi atsatse titfombe tato ebusuku. Bantfu babhala tincwadzi letisitjela ngato.”

Samuel ucabanga ngaloko. “Kodvwa *bantfwana* bati njani ngetambane?”

“Babuta imibuto!”

Samuel naMaryanne bayahamba baya ekhaya. Samuel uthule kakhulu. Ucabanga ngetambane. Ucabanga ngato tonkhe tintfo latatiko ngato.

Ufisa kwangatsi angasibona sambane.



“Maryanne?” kusho yena.

“Yebo?”

“Singahlala wephute kulala bese sifuna tambane?”

Singatsatse lithoshi bese siyahamba buke kutsi

sikhona yini sambane lapha? Singatfola kutsi

ikhona yini imigodzi yetambane lapho tihlala khona?

Singenta njalo? Singenta njalo?”

“Cha.”

Tambane tikhona ngempela?

Ibhalwe nguLesley Beake • Imidwebho idwetijwe nguTamsin Hinrichsen

Imibono lokungakhulunywa ngayo

Samuel bekafuna incwadzi lekhuluma ngesambane. Ngutiphi tinhlobo tetincwadzi lotsandza kutifundza?

Nguyiphi lenye indlela Samuel bekangafola ngayo ngetambane? Uvamise kulufola kanjani lwatiso?



Lokubukwako

Samuel bekanenshisekelo kakhulu ngetambane. Ngisiphi silwane lositsandza kakhulu kunaletinye? Dwebha sifombe saso. Bhala ligama lalesilwane ngaphasi kwesifombe saso noma cela lomunye umuntfu akusite.



Kufundza

Ungalusebentisa yini lolwatiso lolukulenzaba ubhale luhlu lwekutsi "liciniso" kanye "na" ngemanga mayelana netambane?



Kubhala

Samuel wabuta imibuto leminyenti ngetambane ngoba bekanenshisekelo yekufola ngato. Bhala luhlu lwemibuto lesiphohlongo kuya kulelishumi lonenshisekelo yekufola timphendvulo tayo.



Umsebenti wetandla

Yakha sambane usebentise lubumba noma inhlama yekudlala.



Kulingisa

Dlala ulingise inkhulumo lesemkhatsini waSamuel naMaryanne kuncenye yalenzaba ngembi kwekutsi kufikwe kumtapolwati.

