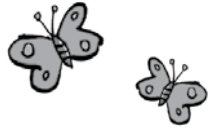


# Foromo ya Tetelelo ya Lenaneo la Malatsi a Boikhutso



Lenaneo la Malatsi a Boikhutso la \_\_\_\_\_  
(le le kaiwang jaaka 'Lenaneo la Malatsi a Boikhutso' fa tlase) <leina la lenaneo la malatsi a boikhutso>

## DITAELO

1. Tsweetswee buisa le go saena foromo e ya tetelelo mo tsebe 2 go netefatsa botsayakarolo jwa ngwana wa gago.
2. Tsweetswee tshwaya gape le dipolelo go simolola mo go (1) go fitlha go (4) mo tsebe 1 go bontsha gore o dumelana le tsone.
3. Jaanong busetsa foromo kwa go Moeteledipele wa Lenaneo la Malatsi a Boikhutso.

**TSWEETSWE E LA TLHOKO:** Ke motsadi kgotsa motlhokomedi fela yo a ka saenang foromo e mme e bile ke fela bana ba ba busetsang foromo e ba ba ka tsenelang Lenaneo la Malatsi a Boikhutso.



Nna, ke le \_\_\_\_\_ ke tlhologanya le go dumelana gore:

<leina le sefane>

1.  Ngwanake a ka tsenela Lenaneo la Malatsi a Boikhutso go simolola ka la \_\_\_\_\_ go fitlha ka la \_\_\_\_\_.

<tšenya matlha a Lenaneo la Malatsi a Boikhutso>

2.  Ke maikarabelo a me a go isa le go busa ngwanake ka pabalesego kwa Lenaneong la Malatsi a Boikhutso.
3.  Go ka nna ga tsewa dinepe le bidio ya ngwanake ka nako ya ditirwana tsa Lenaneo la Malatsi a Boikhutso. Tsone di ka aroganngwa mo bobegakgannyeng le/kgotsa ka mabaka a go dira tlhohlhomiso jaaka karolo ya letsholo la Nal'ibali la go buisetsa go itumela.
4.  Ngwanake a ka tsaya leeto lengwe le lengwe la Lenaneo la Malatsi a Boikhutso.

Leina la ngwana: \_\_\_\_\_

Letlha la botsalo la ngwana: \_\_\_\_\_ Mophato wa ngwana kwa sekolong: \_\_\_\_\_

Leina la Motsadi/Motlhokomedi: \_\_\_\_\_

Dinomoro tsa kgoagano tsa tshoganyetso tsa Motsadi/Motlhokomedi: \_\_\_\_\_

Selefounu: \_\_\_\_\_ Mogala: \_\_\_\_\_

Ikgolaganye le rona ka go leletsa lefelo la rona la megala mo go **02 11 80 40 80**,  
kgotsa ka go dirisa nngwe ya ditsela tse:

 [www.nalibali.org](http://www.nalibali.org)  [www.nalibali.mobi](http://www.nalibali.mobi)

 [nalibaliSA](https://www.facebook.com/nalibaliSA)  [@nalibaliSA](https://twitter.com/nalibaliSA)  [@nalibaliSA](https://www.instagram.com/nalibaliSA)  [info@nalibali.org](mailto:info@nalibali.org)



**Dintlha tsa kgoagano tsa motho wa bobedi mo lebakeng la tshoganyetso:**

Leina: \_\_\_\_\_

Kamano ya motho yo le ngwana: \_\_\_\_\_

Nomoro ya kgoagano (selefounu le/kgotsa mogala): \_\_\_\_\_

**Aterese ya fa gae ya Motsadi/Motlhokomedi:**

\_\_\_\_\_  
\_\_\_\_\_  
\_\_\_\_\_  
\_\_\_\_\_

**A ngwana wa gago o nna kwa atereseng e? Tsweetswee sekeletsa: EE / NNYAA**

Fa e le 'NNYAA', tsweetswee neela aterese ya bodulo e ngwana a dulang kwa go yone:

\_\_\_\_\_  
\_\_\_\_\_  
\_\_\_\_\_  
\_\_\_\_\_

Leina la motlhokomedi kwa atereseng e: \_\_\_\_\_

Nomoro ya kgoagano (selefounu le/kgotsa mogala): \_\_\_\_\_

Fa ngwana wa gago a na le **dialeji dibe kgotsa malwetse**, tsweetswee kwala lenaane la one fano:

\_\_\_\_\_  
\_\_\_\_\_  
\_\_\_\_\_  
\_\_\_\_\_



**Tshaeno:** \_\_\_\_\_

**Letlha:** \_\_\_\_\_

**Ikgolaganye le rona** ka go leletsa lefelo la rona la megala mo go **02 11 80 40 80**,  
kgotsa ka go dirisa nngwe ya ditsela tse:

 [www.nalibali.org](http://www.nalibali.org)  [www.nalibali.mobi](http://www.nalibali.mobi)

 [nalibaliSA](https://www.facebook.com/nalibaliSA)  [@nalibaliSA](https://twitter.com/nalibaliSA)  [@nalibaliSA](https://www.instagram.com/nalibaliSA)  [info@nalibali.org](mailto:info@nalibali.org)

